



# Chipping Hill Times

Issue 05

Date: 10/11/2023

Address: Owers Road, Witham, CM8 1FR

Website: [www.chippinghill.essex.sch.uk](http://www.chippinghill.essex.sch.uk)

Telephone: 01376 512201

Email: [admin@chippinghill.essex.sch.uk](mailto:admin@chippinghill.essex.sch.uk)

Dear All,

Our Year 6 Condors are getting ready for their residential trip to Thorpe Woodlands. They leave on Monday morning and return on Thursday afternoon. The Falcons will be going the following week. I know that all of our Year 6 children will embrace all the activities and will represent our school very well.

Please ensure that your child/ren come to school with a coat as the weather has turned colder. We aim for the children to go outside for play as much as possible.

The children have been carrying out Remembrance activities over the last week and I am sure that you have seen our wonderful Remembrance display at the front of the school. Thank you for your donations to the Royal British Legion.

Mrs Natasha Robson  
Head Teacher



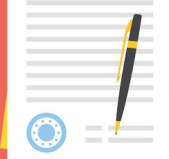
## Primary School Admissions

The primary school (Reception) admission round opened on Monday 6<sup>th</sup> November 2023, for parents of children to apply for a Reception school place for the academic year that starts in September 2024. The statutory national closing date for applications is 15<sup>th</sup> January 2024.

**Applications can be made online via;**  
**[www.essex.gov.uk/admissions](http://www.essex.gov.uk/admissions)**

All of the application information is available on the website. The website also has a copy of the Primary Education in Essex 2023-24 booklet and the Schools Admissions Policies Directories contain details of all admission policies.

APPLICATION



## Events Diary

If there are any changes to the dates listed, we will notify you as soon as possible.

**10.11.23:** Friends of Chipping Hill Quiz Night  
7pm - 9pm

**13.11.23 - 16.11.23:** Year 6 - Condors Residential

**16.11.23:** New Intake Tours at 9.45am and 1.45pm

**20.11.23 - 23.11.23:** Year 6 - Falcons Residential

**20.11.23:** Young Carers Drop In Session 3.30pm

**24.11.23:** Forest School - Kites PM

**29.11.23:** Kestrels Progress starting at 2.50pm in classrooms

**29.11.23:** Year 5 residential meeting (for trip in Year 6) at 3.20pm in KS2 hall

**30.11.23:** Progress - Years 1 - 6 starting at 2.50pm in classrooms (not Kestrels)

**01.12.23:** Forest School - Ospreys PM

**01.12.23:** Year 6 - Class Presentations of Macbeth  
Condors at 1.30pm and Falcons at 2.30pm in KS2 Hall

**05.12.23:** EYFS Nativity at 10am in KS2 Hall

**06.12.23:** EYFS Nativity at 2pm in KS2 Hall

**08.12.23:** Christmas Jumper Day and Book Swap

**08.12.23:** Friend's Festive Friday Christmas Event  
3.30pm to 5.30pm in KS2 Hall

**12.12.23:** EYFS Pair Reading Meeting and Learning  
Journey Meeting at 9am in classrooms

**13.12.23:** Year 2 Christmas Performance at 2pm and  
6pm in KS2 Hall

**14.12.23:** Christmas Lunch Day

**15.12.23:** 2<sup>nd</sup> Hand Uniform Sale after school

**19.12.23:** iRock Concert for Parents at 2.15pm in KS2  
Hall

**20.12.23:** Non Pupil Day

## Attendance and Punctuality

Please can we take this opportunity to remind you of the importance of good school attendance and punctuality. Classroom doors open at 8.40am each day and lessons begin promptly at 8.45am. Please ensure that your child arrives at school on time and has everything with them that they need ready for the day ahead. If your child is unwell and unable to attend school, please contact the school office before 8.50am to inform them of the reason for your child's absence.



## Dinner Menu Rotation

Week commencing 13/11/23: New Autumn Term Lunch Menu 3

Week commencing 20/11/23: New Autumn Term Lunch Menu 1

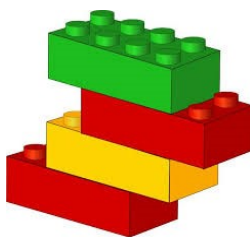
Orders for the weeks commencing 13/11/23 and 20/11/23 have now closed.

The next menu rotations will be sent out on 17<sup>th</sup> November, this will include the Christmas Lunch on 14<sup>th</sup> December so please remember to order this if you would like your child to have a Christmas Lunch.



## Request for Toys

We have had a request from our MDAs for any duplo blocks, toy cars or plastic animal figures for use at playtimes. If you are having a sort out and have anything you could donate, please bring them to the office.



## Community Information

Information regarding the following has been included in the community section of our school website, please take a look if you would like further information. These are all third party events/information, not endorsed by the school, but they may be of interest to you.

- Essex Girls Rugby Taster - Year 6 at Witham Rugby Club
- Essex Library Service Winter Reading Challenge
- Witham Advent Hamper Scheme
- ACL Essex Community and Family Learning-Free Courses
- Private Fostering
- Get into Teaching Event - Thursday 7<sup>th</sup> December

## Recent Letters And Communications

- Kestrels - Progress - Date Change
- Year 6 - Height and Weight Checks
- School Led Tutoring
- Kestrels - Mrs McLoughlin's Maternity Leave
- Wrens - Change of Staff
- Future School Admissions
- Wake Up Wednesday—Microtransactions
- Condors—Communications from Residential
- Reception Applications September 2024
- EYFS - Nativity
- Year 6 - Class Presentations
- Residential Trip 2024 Meeting - current Year 5 pupils
- StandUp Theatre Club - Cancelled
- New policy for mobile phones, devices and smart watches
- Year 3 Forest School - Kites and Ospreys
- Online safety leaflets - TikTok and Snapchat
- Year 6 Visit to Parliament - 10<sup>th</sup> January 2024
- Year 5 Visit to The Royal Greenwich Observatory - 15th January 2024
- Poppy Appeal 2023 - Royal British Legion

## Information and Resources

Please find below information and resources which we feel will be of use to our families.

The NSPCC have an online safety newsletter <https://www.nspcc.org.uk/keeping-children-safe/online-safety/online-safety-newsletter/>

Reading lists for age appropriate reading books for all years can be found at;

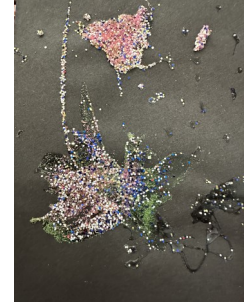
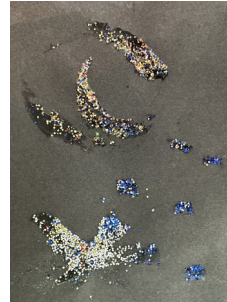
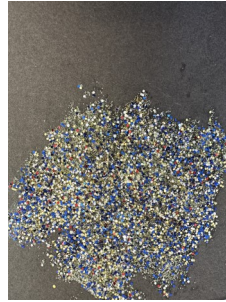
<https://schoolreadinglist.co.uk/category/reading-lists-for-ks1-school-pupils/>

Is my child too ill for school? - NHS Guidance [Is my child too ill for school? - NHS \(www.nhs.uk\)](https://www.nhs.uk/health/a-z/is-my-child-too-ill-for-school/)

Autism Central - East of England Peer Support Hub  
The Peer Education Programme with Autism Central is offering a range of online group support sessions for parents and carers of autistic people.  
[Essex County Council | Autism Central](https://www.essex.gov.uk/essex-county-council/autism-central)

## EYFS - Diwali Celebrations

Over the last week EYFS have been learning about Diwali, and have made some wonderful art work.



## KS1 - Remembrance Day

Our Year 1 and Year 2 classes have been doing some amazing art work for Remembrance Day.



Year 1 completed some collaborative art. They each had a piece of the picture to complete and chose from oil pastels, colouring pencils or tissue paper for their section. They then put it all together, with wonderful results.

Year 2 made some beautiful paper plate poppies.

## Autumn Term Clubs

Please ensure you keep a note of the dates and finishing times of any clubs your child attends.

Unfortunately due to circumstances beyond our control standUP Theatre School will not be running after October half term.

### MONDAYS:

**Choir (Years 1 - 6):** From 25<sup>th</sup> September to 4<sup>th</sup> December, finishing at 4.15pm (£35)

**KS1 Girls Football (Years 1 & 2):** From 2<sup>nd</sup> October to 11<sup>th</sup> December, finishing at 4.15pm

**Boys Football (Years 3 & 4):** From 2<sup>nd</sup> October to 11<sup>th</sup> December, finishing at 4.30pm (£50)

**Young Carers Club:** Drop in session on 20<sup>th</sup> November

### TUESDAYS:

**Tennis (Years 1 - 6):** From 12<sup>th</sup> September to 12<sup>th</sup> December, finishing at 4.05pm (£65)

**KS2 Girls Football (Years 3 - 6):** From 3<sup>rd</sup> October to 12<sup>th</sup> December, finishing at 4.15pm

**KS1 Boys Football (Years 1 & 2):** From 3<sup>rd</sup> October to 12<sup>th</sup> December, finishing at 4.30pm (£50)

**Art Club (Years 5 & 6):** From 31<sup>st</sup> October to 28<sup>th</sup> November, finishing at 4.15pm

### WEDNESDAYS:

**Hip Hop (Years 3 - 6):** From 1<sup>st</sup> November to 13<sup>th</sup> December, finishing at 4.15pm (£35)

**Boys Football (Years 5 & 6):** From 4<sup>th</sup> October to 13<sup>th</sup> December, finishing at 4.15pm

**KS1 Multisport (Years 1 & 2):** From 4<sup>th</sup> October to 13<sup>th</sup> December, finishing at 4.30pm (£50)

### THURSDAYS:

**Hip Hop (Years 1 & 2):** From 2<sup>nd</sup> November to 14<sup>th</sup> December, finishing at 4.15pm (£35)

**KS2 Multisport (Years 3 - 6):** From 5<sup>th</sup> October to 14<sup>th</sup> December, finishing at 4.30pm (£50)

**Netball (Years 5 & 6):** From 5<sup>th</sup> October to 14<sup>th</sup> December, finishing at 4.15pm

### FRIDAYS:

**KS2 Running Club (Years 3 - 6):** From 6<sup>th</sup> October to 15<sup>th</sup> December, finishing at 4.15pm